



# A full journey in onboarding Research Products

Pedro Principe  
OpenAIRE/University of Minho

# OPENAIRE PROVIDE: A GATEWAY TO EOSC



# The OpenAIRE Content Provider Dashboard

- **One-stop-shop** web service  
for
- **Data sources / content providers** (institutional and thematic repositories, data archives, journals, aggregators, CRIS systems)  
who
- interact with OpenAIRE (share and exchange metadata and content)
- **Front-end access** to many of OpenAIRE's  
**backend services**



# WHAT?

## SATISFYING THE USER NEEDS

### VALIDATE

The **Validator** service assesses the metadata quality by measuring your data source compatibility with the the **OpenAIRE guidelines** to expose your content by using global standards.

### REGISTER

If validation succeeds your data source can be **registered for regular aggregation** and indexing in OpenAIRE. You become part of the EOSC ecosystem and a global interlinked network to reach a wider audience around the world.



### ENRICH

Improve your metadata. Get more connections. **OA Broker service** offers a wealth of information on scholarly communication data. Find out what interests you and subscribe to enrich your records.

### MEASURE

Share usage data via OpenAIRE's global **Metrics Service – usage counts**. Get the benefit of an aggregated environment.

### COLLECTION MONITOR

Provides the **aggregation history**. Track the aggregation stage, collection mode and the number of records aggregated thus improving your metadata quality.

### NOTIFICATIONS

Once registered in OpenAIRE, content providers can use the Provide functionalities and to **get notifications & alerts** (enrichments, errors, useful info).

# WHO?

## Targets

- ✓ Literature & Data Repository managers
- ✓ Data archives managers
- ✓ CRIS systems managers
- ✓ OA journals editors
- ✓ Libraries
- ✓ National aggregators



Over **2300** data sources  
(direct data sources with access to  
the dashboard)

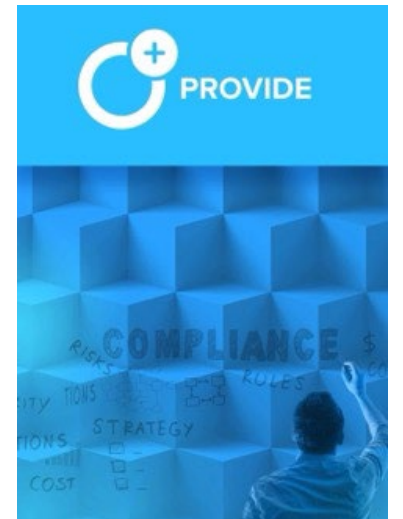
# WHY?

- **Benefits**

- **Extending repository metadata** models to Open Science practices,
- **Keeping the collections up-to-date:** alerts, enrichments, additions,
- Fostering notification-based and federated dissemination of knowledge.

- **Added Value >> improve**

- Repository **interoperability**, collections and content for enhanced **visibility** and access,
- Institution memory & research assessment.





- R Register
- V Validator
- Validate
- Validation History
- N Notifications

- Archivio della ricerca- Univer...
- DataRepositoriUM
- Repositório Institucional do I...
- Cadernos BAD
- Show more

**MULTIUSER  
ACCESS**  
can be provided to  
manage the  
datasource  
dashboard



## Universidade do Minho: RepositoriUM

DASHBOARD

UPDATE

AGGREGATION HISTORY

ENRICHMENTS

USAGE COUNTS

Records collected on 2022-09-09

77,340



Enrichments

271,002



Downloads

3,550,485



Views

2,359



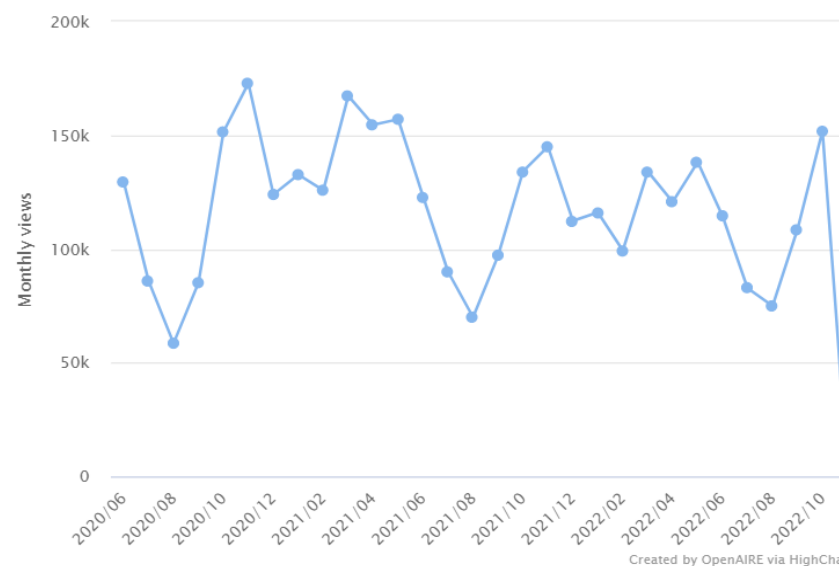
### Aggregation History

2022-11-07  
Aggregation stage  
TRANSFORM  
Number of records  
77,545

2022-11-07  
Aggregation stage  
COLLECT  
Collection mode  
REFRESH  
Number of records  
78,319

2022-10-31  
Aggregation stage  
TRANSFORM  
Number of records  
77,473

### Usage Counts



Last month's reports

AR1

IR1

RR1

BR1

BR2

# VALIDATOR SERVICE

Validate your datasource



Literature repository



Data repository



CRIS systems

BETA



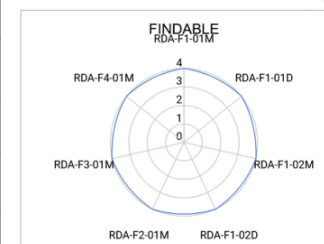
FAIR assessment



## FAIRification

### Findable

Indicator Id	FAIR Indicator	Priority	met in the guidelines	Primarily Supported in the Guidelines
RDA-F1-01M	Metadata is identified by a persistent identifier	Essential	y	Resource Identifier
RDA-F1-01D	Data is identified by a persistent identifier	Essential	y	Resource Identifier
RDA-F1-02M	Metadata is identified by a globally unique identifier	Essential	y	Resource Identifier
RDA-F1-02D	Data is identified by a globally unique identifier	Essential	y	Resource Identifier
RDA-F2-01M	Rich metadata is provided to allow discovery	Essential	y	implicitly
RDA-F3-01M	Metadata includes the identifier for the data	Essential	y	File Location
RDA-F4-01M	Metadata is offered in such a way that it can be harvested and indexed	Essential	y	implicitly





Register your datasource



Repository



Journal



Aggregator



CRIS systems

## Updated registration interface

**Deployed in Production** (Nov. 8<sup>th</sup>)

- New merged interface for literature and data repositories.

**ONE ENTRY POINT TO REGISTER  
REPOSITORIES / DATA SOURCES FROM  
OPENDOAR, RE3DATA, FAIRSHARING.  
DEDUPLICATED AND PRESENTED IN ONE  
SINGLE LIST.**

Register your datasource

1

Select Repository

2

Register data source

3

Register interface

4

Terms of Use

5

Finish

Please make sure your repository is registered in [OpenDOAR](#), [Re3data](#) or [FAIRsharing](#).

**Last Updated (OpenDOAR):** 2022-11-06

**Last Updated (Re3data):** 2022-11-08

**Last Updated (FAIRsharing):** 2022-08-26

Select country

EOSC SYMPOSIUM 2022 | 14 November 2022

# METADATA ENRICHMENTS



## Enrich Your Content - Browse Events

For each topic a sample of 100 events will be displayed, as well as the total number that can be potentially built for your data source. If you are interested to receive the full list, you can subscribe to these events and then be notified about the new enrichment events.

### More

ADDITIONAL METADATA INFORMATION THAT MAY ENRICH OR SUPPLEMENT  
UNIVERSIDADE DO MINHO: REPOSITORIUM CONTENT

# OF EVENTS

[ENRICH/MORE/OPENACCESS\\_VERSION](#)

Another Open Access version of a publication

134629

[ENRICH/MORE/PID](#)

Another persistent identifier associated to your publications

23006

[ENRICH/MORE/SUBJECT/ARXIV](#)

Another ARXIV classification term that can be associated to your publications

558

### Missing

MISSING METADATA INFORMATION THAT MAY ENRICH OR COMPLETE  
UNIVERSIDADE DO MINHO: REPOSITORIUM CONTENT

# OF EVENTS

[ENRICH/MISSING/OPENACCESS\\_VERSION](#)

An Open Access versions of your publications

134629

[ENRICH/MISSING/AUTHOR/ORCID](#)

An Open Researcher and Contributor ID (ORCID) that can be associated to an author of your publications

11535

[ENRICH/MISSING/PROJECT](#)

A project reference that can be associated to your publications

624

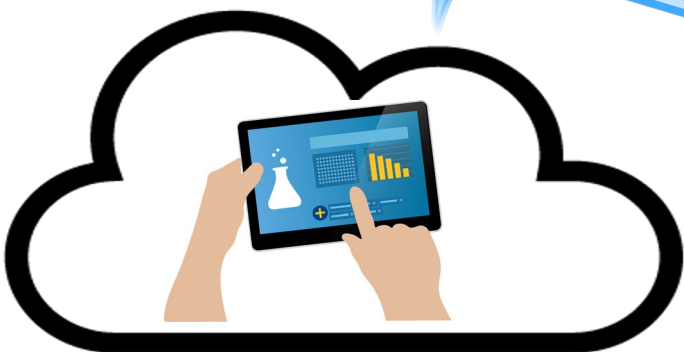
# Improve your metadata. Get more connections

- OpenAIRE Broker service
  - Wealth of information on scholarly communication data to enrich the metadata or the content of the data source
  - Publication's enrichments:
    - Open Access version(s)
    - Additional associated PIDs
    - An associated Open Researcher and Contributor ID (ORCID)
    - Links to project
    - Subject classification (ACM, arXiv, JEL, DDC, MeSH)
    - Publication Date
  - Beta: links to datasets, software



# SHARING RESOURCES BEYOND ORGANIZATIONAL BOUNDARIES & ENRICHING DATA SOURCES METADATA

*Share resources!*

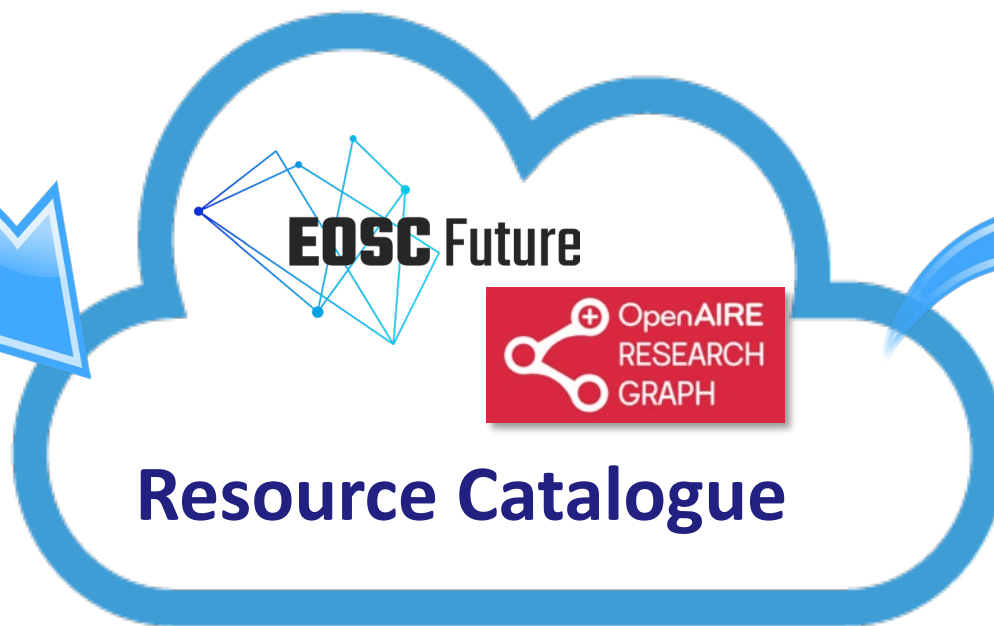


Repositories, CRIS systems...  
institutions, research  
communities, libraries...)

*Search, find, identify,  
compose, and reuse  
resources!*

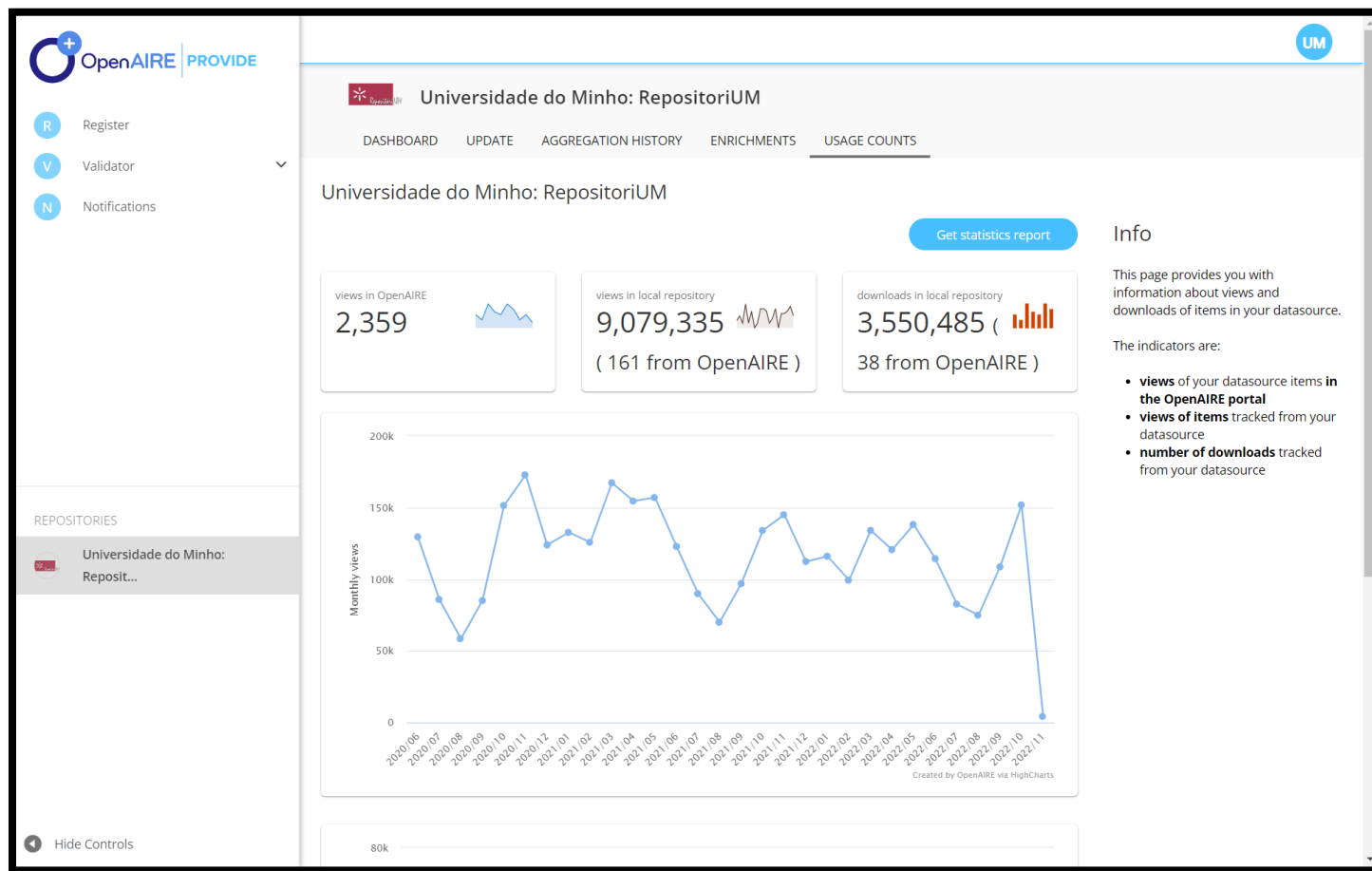


**EOSC users**  
RIs, clusters, e-infras, long tail,  
libraries, organizations, funders,  
companies



**Metadata enrichment**  
(OpenAIRE Broker Service)

# USAGE STATISTICS



OpenAIRE  
UsageCounts

## AR1 report for Universidade do Minho: RepositoriUM

### Report Request

Report Name  
AR1

Release  
4

Requestor  
repositorium@s dum.uminho.pt

### Report Filters

#### Date range

Valid date formats are yyyy-mm-dd or yyyy-mm. Default range is the last available month.

Begin Date  
2016-03

End Date  
2016-06

#### Filters

For more specific results, provide an Item Identifier. Identifier format: namespace:value. Valid namespace for Item Identifier: openaire, doi or oid (for OAI-PMH).

Repository Identifier  
opendoar:307

Item Identifier  
e.g. openaire:od\_\_\_\_\_:fb90de6f20d79783d0574

Get Report

COUNTER  
Code of Practice  
R4 & R5

# Building **trust** and **value**

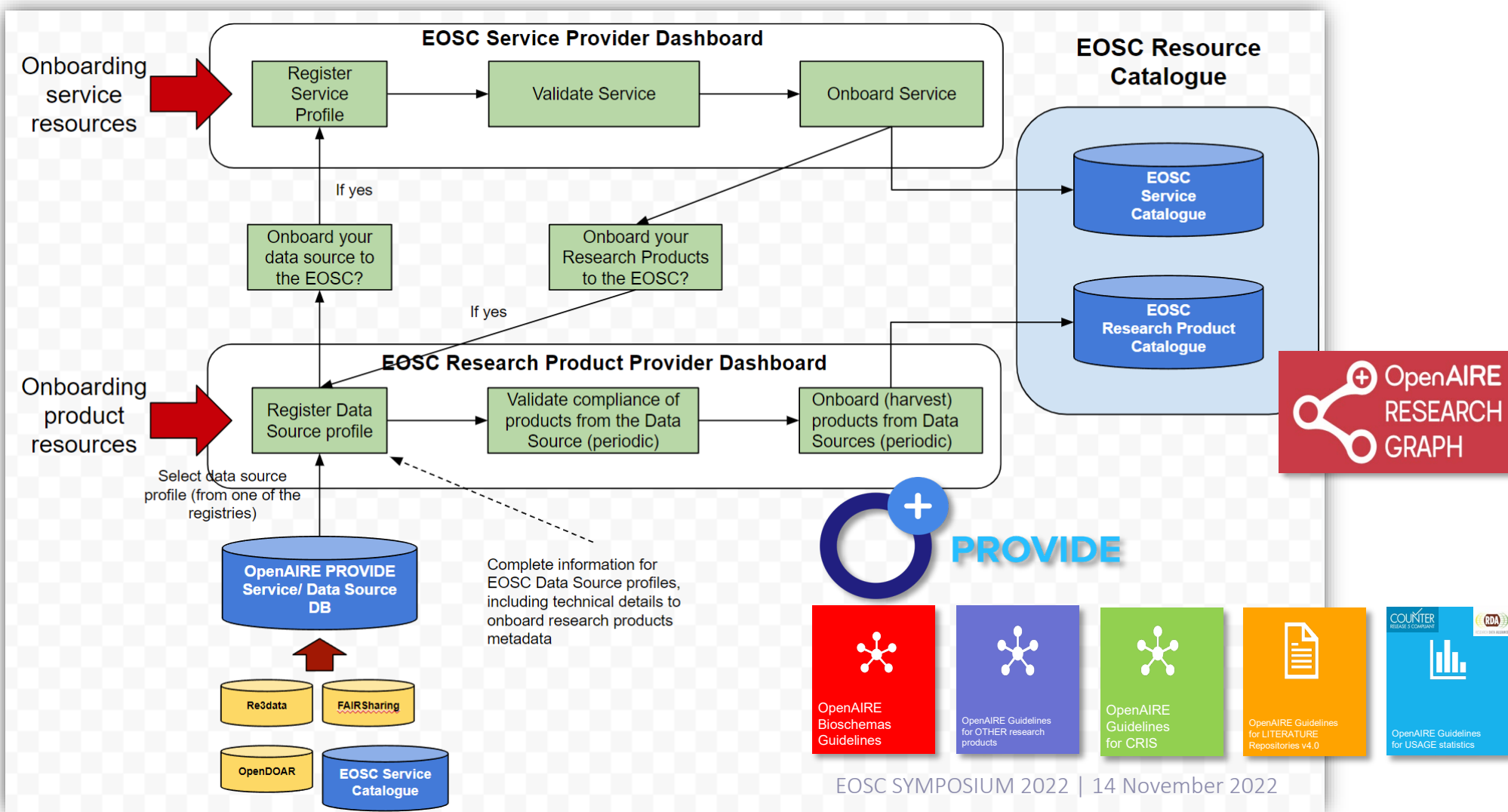
- Repositories, CRIS... networks and EOSC
- Community-driven service with a strong focus on the end-user needs (user-centered design) based on feedback during the **monthly community calls**
  - Challenges for:
    - Better relationship and interaction with the targeted users
    - Transparency of the service's developments

The screenshot displays a user interface for community calls and agendas. It features two main blue header boxes: 'Upcoming calls & Agendas' on the left and 'Notes & Recordings' on the right. Below the 'Upcoming calls & Agendas' header, there is a list of events. The first event is for November 9th, 2022, with main topics including updates in the dashboard and a campaign to upgrade data sources. It notes that the meeting was postponed to 2:30 PM CET and provides a 'Register here' button. The second event is for December 7th, 2022. To the right, under the 'Notes & Recordings' header, there is a list of dates from October 5th to March 2nd, 2022. The October 5th entry includes a main topic about CRIS systems registration and links for notes, slides, and recordings. Other dates listed are June 8th, May 5th, April 6th, and March 2nd, each with a plus icon indicating more content.

Upcoming calls & Agendas	Notes & Recordings
<b>November 9th, 2022</b> Main topics: <ul style="list-style-type: none"><li>• Updates in the Dashboard</li><li>• Campaign to upgrade the compatible level of registered data sources</li></ul> When: November 2nd 9th, 2022 <ul style="list-style-type: none"><li>• The November meeting was postponed to the 9th at 2:30 PM CET.</li></ul> Time: 2:30 PM - 3:30 PM CET Where: Zoom <a href="#">Register here</a>	<b>October 5th, 2022</b> Main topic: <ul style="list-style-type: none"><li>• CRIS systems registration in OpenAIRE and most recent developments</li></ul> Results: <ul style="list-style-type: none"><li>• <a href="#">Notes</a></li><li>• <a href="#">Slides</a></li><li>• <a href="#">Recording</a></li></ul>
<b>December 7th, 2022</b>	<b>June 8th, 2022</b>
	<b>May 5th, 2022</b>
	<b>April 6th, 2022</b>
	<b>March 2nd, 2022</b>



# EOSC RESOURCE ONBOARDING WORKFLOWS & OPENAIRE PROVIDE



# THANKS

---

**Email**

[pedro.principe@usdb.uminho.pt](mailto:pedro.principe@usdb.uminho.pt)

---

**Twitter**

[@pedroprincipe](https://twitter.com/pedroprincipe)

---