



EOSC Symposium 2022

**Talk 3: Engaging data repositories in EOSC**


**Session: Engagement of research communities and service providers in EOSC**


Tuesday, November 15, 16:00 - 17:30


Speaker: [Nina Leonie Weisweiler](#)

# re3data: Connected via EOSC Marketplace


[Contact us](#) [Portal Home](#) [Catalogue & Marketplace](#) [Providers Dashboard](#) [Providers Documentation](#) [Nina Leonie Weisweiler](#) [Logout](#)

 **EUROPEAN OPEN SCIENCE CLOUD**

All resour... 

My EOSC Marketplace 

[Home](#) > [Resources](#) > [Aggregators & Integrators](#) > [Aggregators & Integrators](#) > [Services](#) > re3data - registry of research data repositories

  
REGISTRY OF RESEARCH DATA REPOSITORIES

## re3data - registry of research data repositories

re3data

Find research data repositories and their metadata on a global scale.


Organisation: [Karlsruhe Institute of Technology](#)

Provided by: [KIT - Library](#)

☆☆☆☆☆ (0.0 / 5) 0 reviews ☐ Add to comparison ☐ Add to favourites

[Webpage](#) [Helpdesk e-mail](#)

[Access the resource](#)

 FULLY OPEN ACCESS

[Ask a question about this resource?](#)


ABOUT

DETAILS

REVIEWS (0)

re3data is a global registry of research data repositories that covers research data repositories from different academic disciplines. It includes repositories that enable permanent storage of and access to data sets to researchers, funding bodies, publishers, and scholarly institutions. re3data promotes a culture of sharing, increased access and better visibility of research data.

**SCIENTIFIC CATEGORISATION**

  
Generic

# EU Projects with re3data participation supporting the EOSC

2019-2022:

Tools for finding and selecting **FAIR enabling repositories** to researchers and other stakeholders

Integration of repository information into **DataCite Commons**

- re3data as metadata source
- linking with other entities of the PID graph
- providing additional insights



Launched in Summer 2022:

Practical implementation of the FAIR principles across all domains through FAIR-enabling practices, tools and services.

More at: <https://fair-impact.eu/>

# Networks and integrations

re3data is a **central reference point and metadata source** for other service providers on the European and international level:

[OpenAIRE's Open Science Observatory](#)

[European Open Science Monitor](#)

[F-UJI Automated FAIR Data Assessment Tool](#)

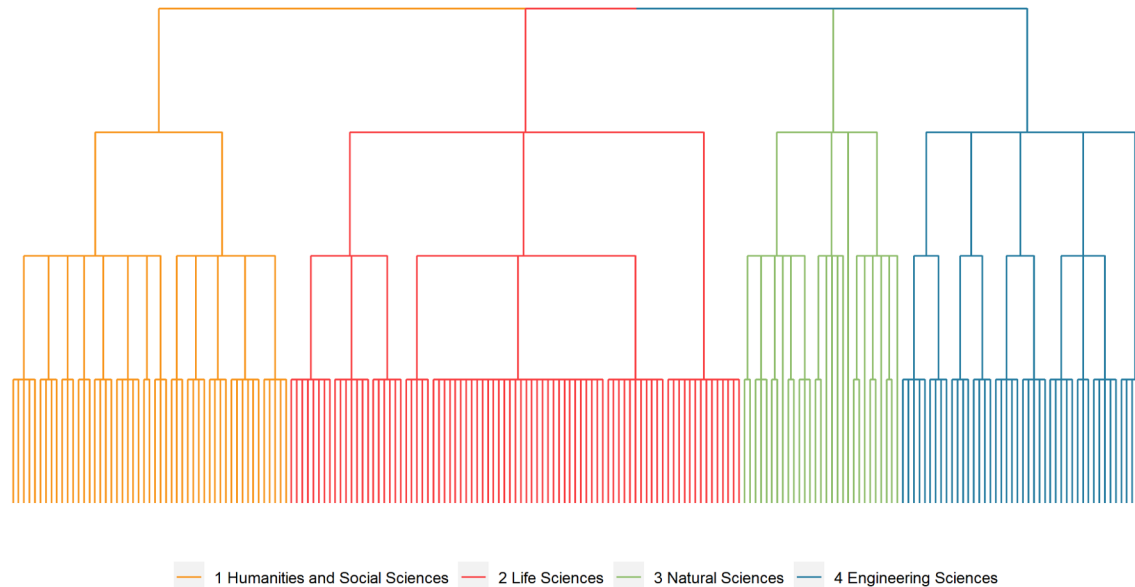
[DARIAH-EU Data Deposit Recommendation Service](#)

[DataCite Commons](#)

and many others...

# Collaboration with EUDAT service B2FIND

re3data collaborates with the [B2FIND](#) team with the goal of harmonizing their subject classifications



See also:

<https://coref.project.re3data.org/blog/reviewing-the-subject-classification-in-re3data>



**Global Registry  
of Research Data  
Repositories**

**re3data.org**  
REGISTRY OF RESEARCH DATA REPOSITORIES

Search...

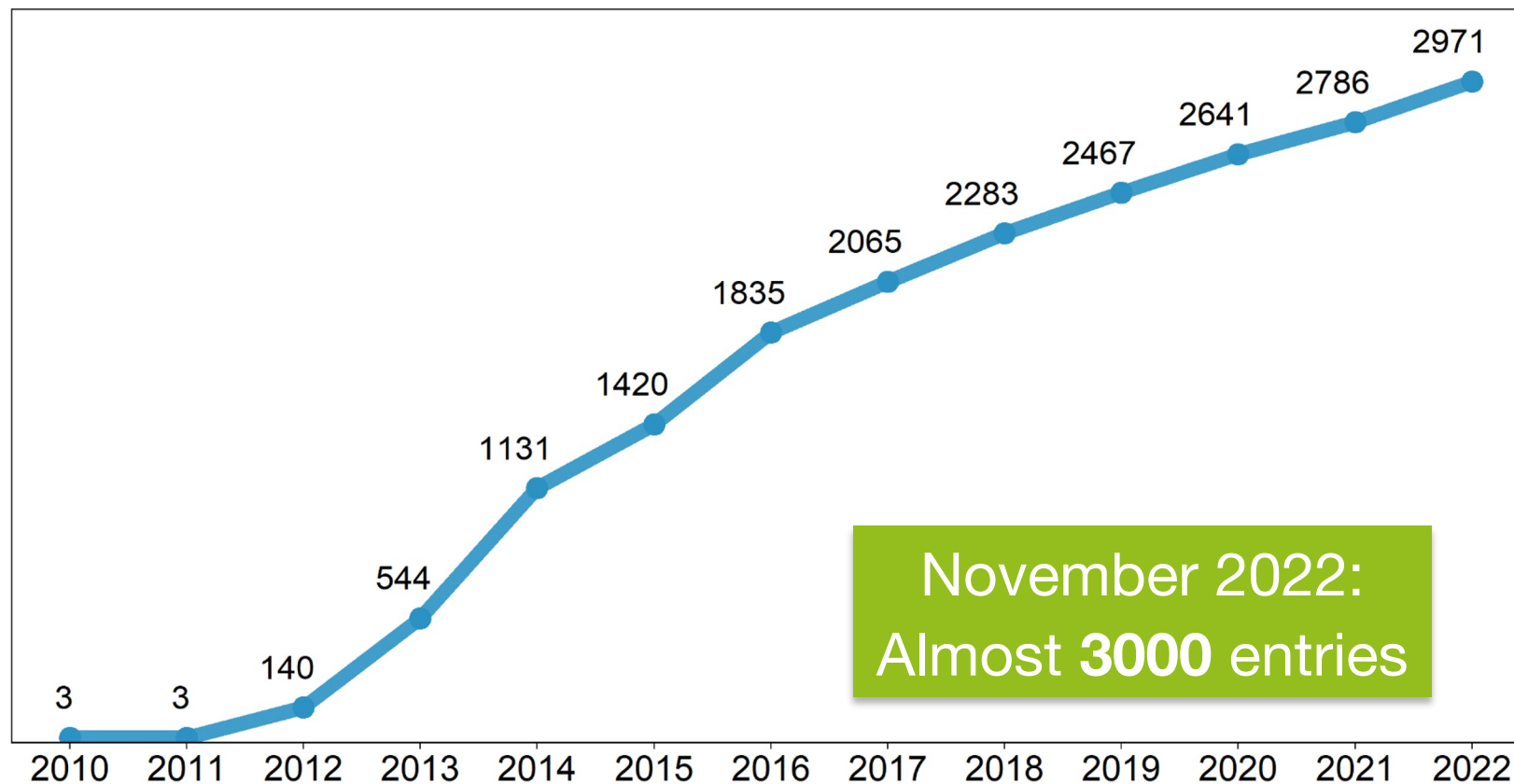
Search

across all  
**research  
disciplines**

... presents **repositories** for the **permanent storage** and **access** of research data sets to researchers, funding bodies, publishers and scholarly institutions.

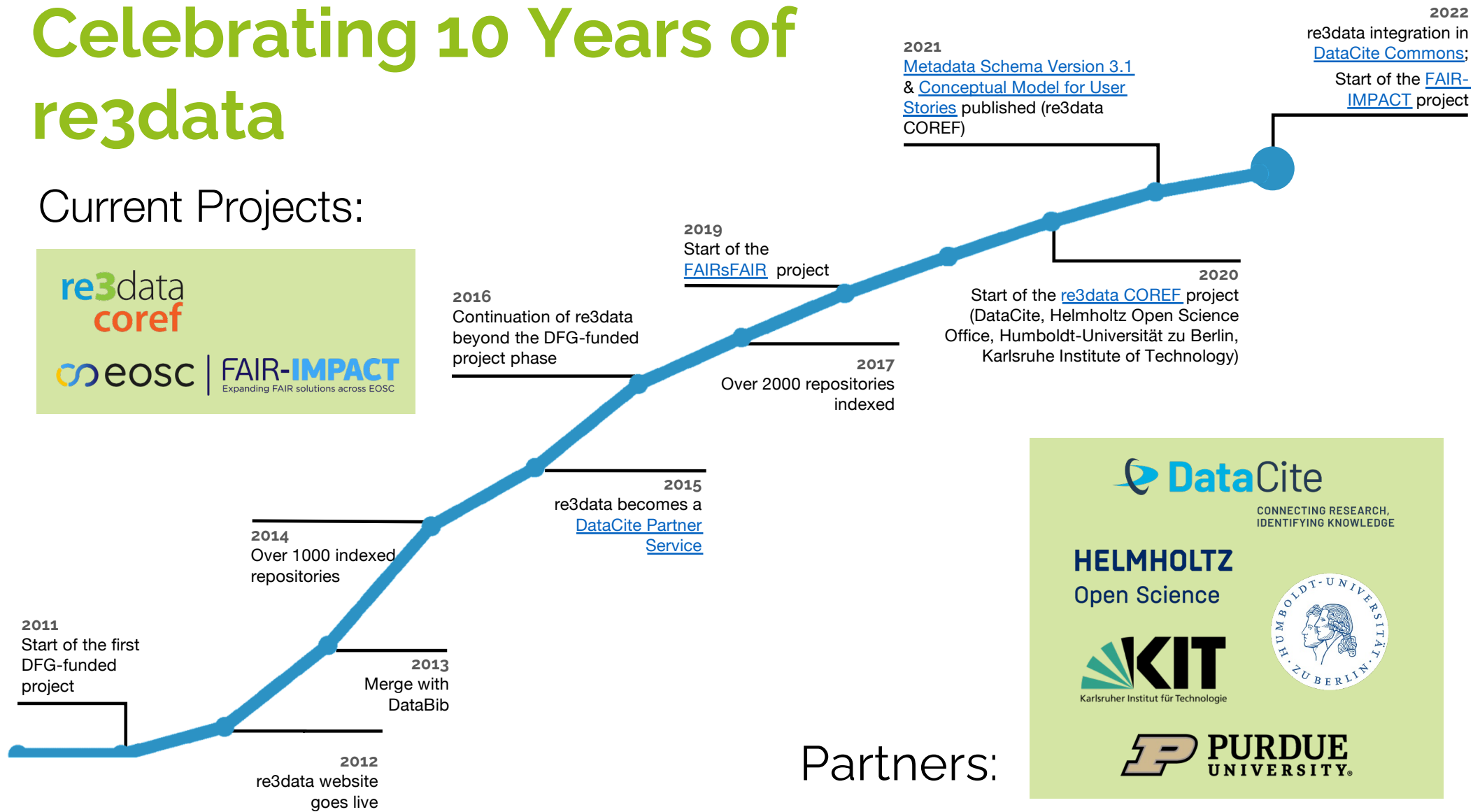
...promotes a culture of **sharing, increased access and better visibility** of research data

# Number of repositories indexed in re3data per year:



# Celebrating 10 Years of re3data

## Current Projects:



## Partners:





# What is a “repository” in re3data?

We refer to all re3data entries as “repositories”.

- Repositories in re3data are defined as “[...] a subtype of a sustainable information infrastructure providing long-term storage of and access to research data.” ([Metadata Schema for the Description of Research Data Repositories](#), Version 3.1)

The re3data registration policy is intentionally inclusive to cover a broad range of infrastructures for research data.

The screenshot displays the re3data.org website interface. At the top, the logo 're3data.org' is on the left, and navigation links 'Search', 'Browse', 'Suggest', 'Resources', and 'Contact' are on the right. Below the header, the repository details for 'Forschungsdatenzentrum im Kraftfahrt-Bundesamt' are shown. The 'General' tab is selected, displaying fields for Name of repository, Additional name(s), Repository URL, Subject(s), Description, Contact, Content type(s), Certificates and Standards, Keyword(s), Repository type(s), Research data repository language(s), and Data and/or service provider. The description states that the statistics pages of the Kraftfahrt-Bundesamt (KBA) provide an overview of official facts and figures relating to motor vehicles and their users. The data on this page are continuously updated. Publications generally appear as annual statistics. In addition to this, we provide monthly results relating to new registrations and changes of ownership in Germany, as well as information relating to road haulage with German vehicles. The currently provisionally accredited research data center of the Kraftfahrt-Bundesamt extends the data portfolio of the official register data and initially provides anonymised microdata for access to the driving fitness register (FAER). Statistics published by the KBA are available exclusively in German. The contact email is fdz@kba.de. The content type is 'Standard office documents', 'Plain text', and 'Scientific and statistical data formats'. The keyword is 'Rat für Sozial- und Wirtschaftsdaten'. The repository type is 'disciplinary'. The research data repository language is 'German'. The data and/or service provider is 'data provider'. At the bottom, there are links for 'Back to search', 'Submit a change request', and 'Get a badge'. A 'DataCite' logo is also present.

re3data.org

Search Browse Suggest Resources Contact

Repository details

**Forschungsdatenzentrum im Kraftfahrt-Bundesamt**

General Institutions Terms Standards

Name of repository: Forschungsdatenzentrum im Kraftfahrt-Bundesamt

Additional name(s): FDZ im KBA

Repository URL: [https://www.kba.de/DE/Statistik/Forschungsdatenzentrum/forschungsdatenzentrum\\_node.html](https://www.kba.de/DE/Statistik/Forschungsdatenzentrum/forschungsdatenzentrum_node.html)

Subject(s): Traffic and Transport Systems, Logistics; Systems Engineering; Computer Science, Electrical and System Engineering; Engineering Sciences; Human Factors, Ergonomics, Human-Machine Systems

Description: The statistics pages of the Kraftfahrt-Bundesamt (KBA) provide an overview of official facts and figures relating to motor vehicles and their users. The data on this page are continuously updated. Publications generally appear as annual statistics. In addition to this, we provide monthly results relating to new registrations and changes of ownership in Germany, as well as information relating to road haulage with German vehicles. The currently provisionally accredited research data center of the Kraftfahrt-Bundesamt extends the data portfolio of the official register data and initially provides anonymised microdata for access to the driving fitness register (FAER). Statistics published by the KBA are available exclusively in German.

Contact: fdz@kba.de

Content type(s): Standard office documents; Plain text; Scientific and statistical data formats

Certificates and Standards: Rat für Sozial- und Wirtschaftsdaten

Keyword(s): Register of Driver Fitness - Fahreignungsregister - FAER; drivers; driving licenses; motor vehicles; road haulage; tachograph cards; Search with keyword 'driving licenses'

Repository type(s): disciplinary

Research data repository language(s): German

Data and/or service provider: data provider

Back to search Submit a change request Get a badge

**Cite this re3data.org record:**

re3data.org: Forschungsdatenzentrum im Kraftfahrt-Bundesamt; editing status 2019-11-08; re3data.org - Registry of Research Data Repositories. <http://doi.org/10.17616/R31NJMNl> last accessed: 2022-10-26

# re3data Metadata Schema



## Metadata Schema for the Description of Research Data Repositories

Version 3.1, August 2021

DOI: <https://doi.org/10.48440/re3.010>

Authors: [Dorothea Strecker](#)<sup>1</sup>, [Roland Bertelmann](#)<sup>2</sup>, [Helena Cousijn](#)<sup>3</sup>, [Kirsten Elger](#)<sup>4</sup>, [Lea Maria Ferguson](#)<sup>5</sup>, [David Fichtmüller](#)<sup>6</sup>, [Hans-Jürgen Goebelbecker](#)<sup>6</sup>, [Maxi Kindling](#)<sup>1</sup>, [Gabriele Kloska](#)<sup>6</sup>, [Thanh Binh Nguyen](#)<sup>6</sup>, [Heinz Pampel](#)<sup>6</sup>, [Vivien Petras](#)<sup>1</sup>, [Rouven Schabinger](#)<sup>6</sup>, [Edeltraud Schnepf](#)<sup>6</sup>, [Angelika Semrau](#)<sup>6</sup>, [Margarita Trofimenko](#)<sup>6</sup>, [Robert Ulrich](#)<sup>6</sup>, [Arne Upmeyer](#)<sup>6</sup>, [Paul Vierkant](#)<sup>3</sup>, [Nina Leonie Weisweiler](#)<sup>6</sup>, [Yi Wang](#)<sup>7</sup>, [Michael Witt](#)<sup>7</sup>.

<sup>1</sup> [Humboldt-Universität zu Berlin](#), Berlin School of Library and Information Science, Germany

<sup>2</sup> [Helmholtz Association](#), Helmholtz Open Science Office, Germany

<sup>3</sup> [DataCite - International Data Citation Initiative e.V.](#)

<sup>4</sup> [GFZ German Research Centre for Geosciences / Helmholtz-Zentrum Potsdam – Deutsches GeoForschungsZentrum \(GFZ\)](#), Germany

<sup>5</sup> [Botanischer Garten und Botanisches Museum Berlin](#), Germany

<sup>6</sup> [Karlsruher Institut für Technologie / Karlsruhe Institute of Technology \(KIT\)](#), Germany

<sup>7</sup> [Purdue University](#), United States

Contact  
[info@re3data.org](mailto:info@re3data.org)  
<https://www.re3data.org>

## 42 Properties on...

General information

Responsibilities

Policies

Legal aspects

Technical standards

Quality standards

DOI for repository descriptions

Since 2020: ROR IDs for institutions

## Version 3.1 of the Metadata Schema:

<https://www.re3data.org/schema>

Strecker S., et al. (2021): Metadata Schema for the Description of Research Data Repositories: version 3.1, <https://doi.org/10.48440/re3.010>



# Input: Keeping records up-to-date

Automated updates (e.g. CoreTrustSeal)

Reviews by the editorial team

Change requests:

## Submit a change request

Make changes to the properties that need an update. The editorial board will review the submitted record and put it online

General	
Repository name	<input type="text" value="nanoHUB"/>
Repository name language	<input type="text" value="English"/>
Additional names	<div><div>Text</div><div><input type="text" value="nanoHUB.org"/></div></div>
Language	<div>English</div>
Repository url	<input type="text" value="https://nanohub.org/"/>
Subjects	<div><div>Name</div><div><input type="text" value="31 Chemistry"/></div></div> <div><div>Scheme</div><div><input type="text" value="DFG"/></div></div>

[Back to search](#)

[Submit a change request](#)

# Output: Querying the re3data API with R

[https://github.com/re3data/using\\_the\\_re3data\\_API](https://github.com/re3data/using_the_re3data_API)

There are many conceivable use cases for re3data metadata.

In this GitHub repository, we provide examples for using the re3data API that can be adapted to fit other use cases.

The example use cases are implemented in R and Python using Jupyter Notebooks.

See also:

[https://coref.project.re3data.org/blog/using\\_the\\_re3data\\_api](https://coref.project.re3data.org/blog/using_the_re3data_api)

# Develop & enhance re3data: Current project



## Conceptual Service Model

Embed the registry within the research community and infrastructure landscape to meet the emerging needs for a trusted repository reference.

## Metadata Schema

Revision and enhancement of the re3data metadata schema for the description of research data repositories.

## Technical Infrastructure

Implement new features and the updated metadata schema.  
Provide the necessary technical infrastructure and services.

## Quality & Transparency

Conduct a comprehensive study on quality assurances at research data repositories to improve re3data metadata information.  
Improve re3data metadata quality, trust and transparency.

## Community Building

Extensive outreach activities, networking and policy development.



# Community engagement in re3data COREF

## Conceptual Service Model

Stakeholder survey & workshop series: [Read more](#)

## Metadata Schema

Public RFC process: [Read more](#)

## Technical Infrastructure

Improvements & development in consultation with the community

API use cases examples: [Read more](#)

## Quality & Transparency

Survey on quality management at research data repositories & related workshop in collaboration with CoreTrustSeal: Check the [project blog](#) for updates!

## Community Building

Extensive outreach activities: Blog, social media, mailings, events & workshops...



New study finds that the share of researchers who store data in research data repositories is still low...

**re3data is here to support change!**

**See tomorrow's Session "European Research Data Landscape (2021-2022)"**

Wednesday, Nov 14, 14:30 - 16:00 CET

# Join in!

Become a part of the EOSC network by registering your repository in re3data:

<https://www.re3data.org/suggest>

**re3data.org**  
REGISTRY OF RESEARCH DATA REPOSITORIES

# re3data.org

REGISTRY OF RESEARCH DATA REPOSITORIES

Any questions?



Stay in touch!

Web: [www.re3data.org](http://www.re3data.org)

Mail: [info@re3data.org](mailto:info@re3data.org)

Twitter: [@re3data](https://twitter.com/re3data)



<https://creativecommons.org/licenses/by/4.0/>